



# SAGE

**sage** 1 <sup>1</sup> (sā)

*n.*

One venerated for experience, judgment, and wisdom.

*adj.* **sag-er**, **sag-est**

1. Having or exhibiting wisdom and calm judgment.

2. Proceeding from or marked by wisdom and calm judgment: *sage advice*.

## Percipient StorAGe for Exascale Data Centric Computing

**Per-cip-i-ent** (pr-sp-nt)

*Adj.*

Having the power of perceiving, especially perceiving keenly and readily.

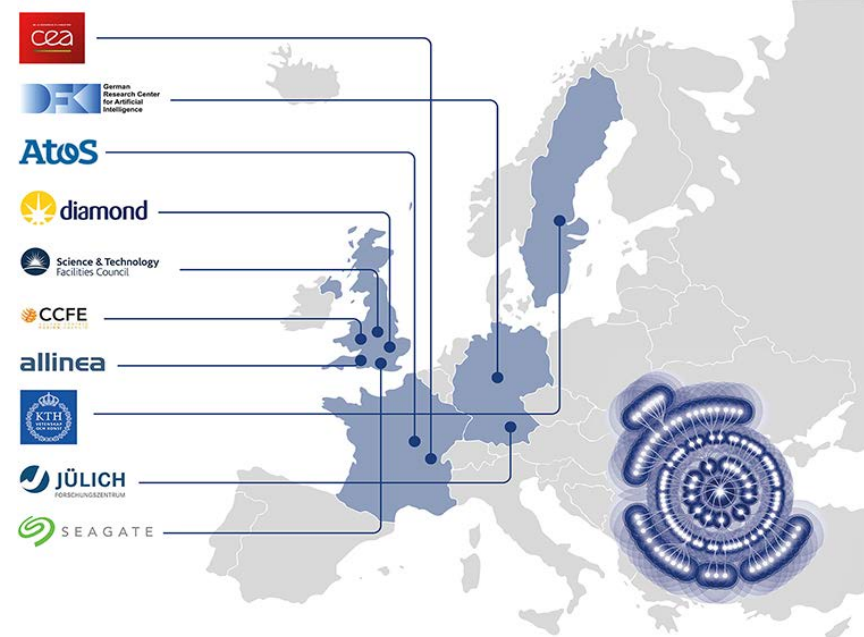
*n.*

One that perceives.

*The material presented reflects the presenters view point and may not present the views of the European Commission*

This project has received funding from the European Union's Horizon 2020 research and innovation programme under grant agreement No 671500





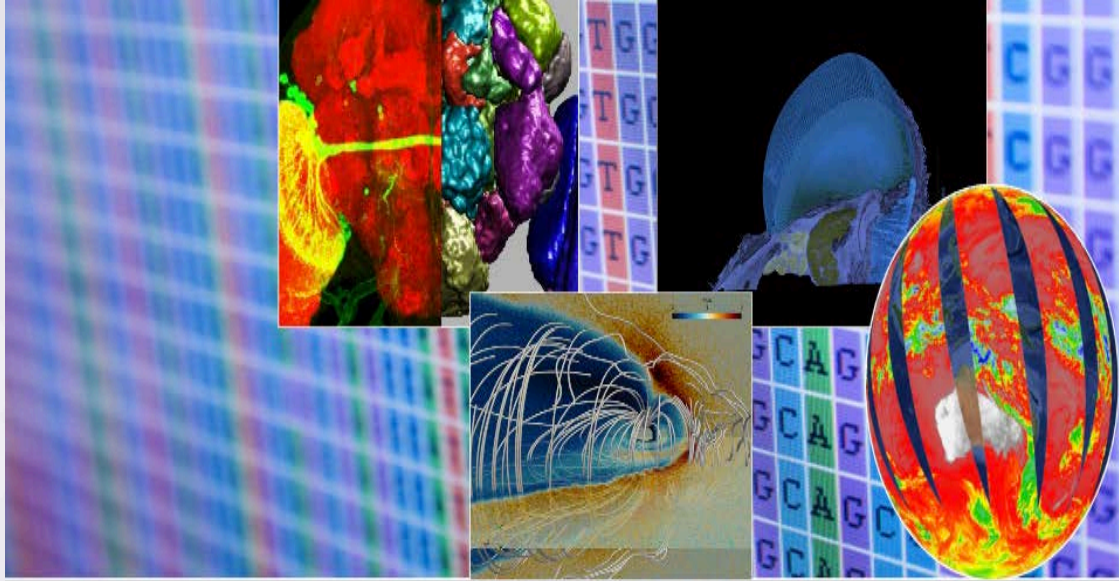
Project lead by Seagate  
 Validated with use cases: 2018

**SAGE aims to lay the foundation for future  
 Extreme Scale/Data Intensive Storage Platforms**



[www.sagestorage.eu](http://www.sagestorage.eu)

## Co-Design with Use cases:

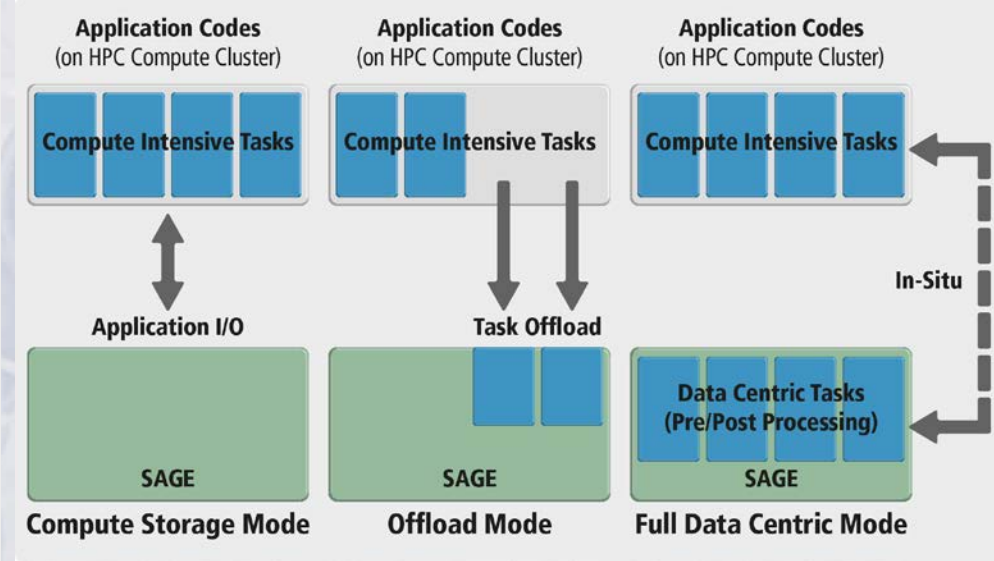
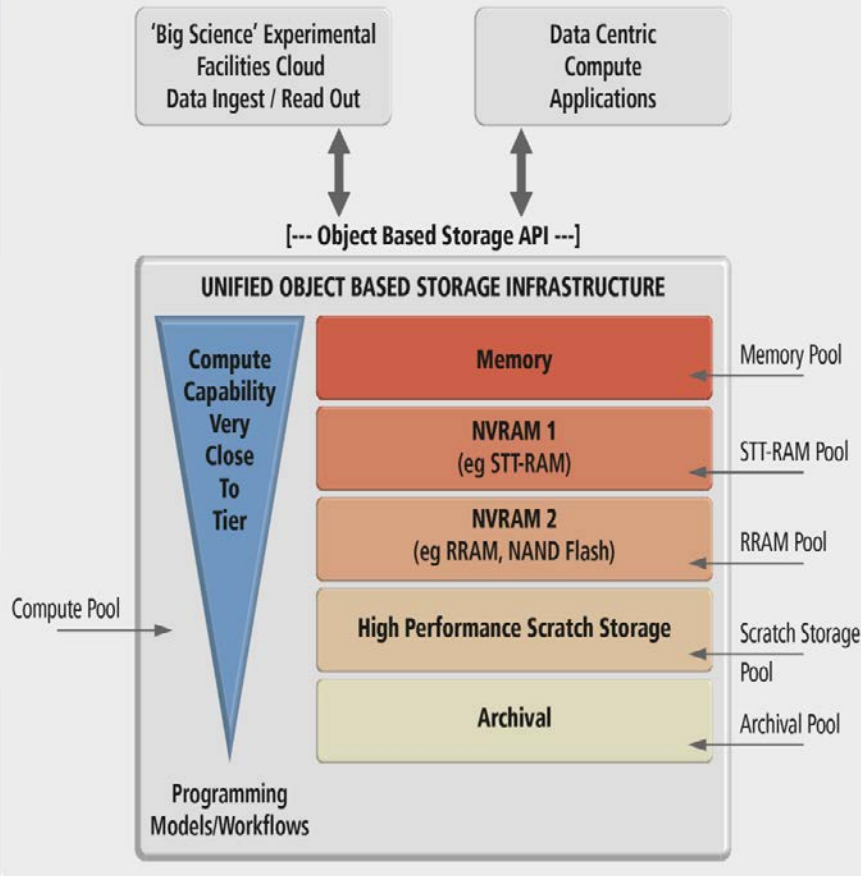


- Visualization
- Satellite Data Processing
- Bio-Informatics
- Space Weather
- Nuclear Fusion (ITER)
- Synchrotron Experiments

Validation at Juelich  
Supercomputing Center [ 2018]

*Growing HPDA/Big Science Requirement:  
Simulation & Big Data Analysis as part of the same workflow*





### Status

- ✓ Co -Design Activity
- ✓ Hardware Platform Definition
- ✓ Design of core software components
- ✓ Successful First EC Review